

RKA 185 1/4 - 1 POLE



087820-0-3

TERMINAL CROSS SECTION

4 x 185 mm² - 95 mm² (350 kcmil - 3/0 AWG)
150 mm² - 70 mm²



- > modular system
- > user-defined stackable
- > to fit on DIN rail TS 35 or installation plate

MEASUREMENT CONNECTION

2 x 10 mm² - 1,5 mm² (8 - 16 AWG)
6 mm² - 1,5 mm² (10 - 16 AWG)



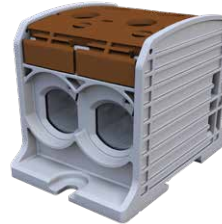
AL / CU



087820-1-3



087820-2-3



087820-3-3



087820-4-3

For aluminium and copper conductors (Al/Cu)



NOMINAL VOLTAGE

1000 V AC/DC
600 V

NOMINAL CURRENT

353 A Cu
310 A Cu / 250 A Al

STANDARDS

IEC 60947-7-1
UL-1059 / CSA C22.2 No.158-10



Model	Part No.	Type	PU	GTIN / EAN
RKA 185 1/4 for aluminium/ copper conductors	087820-0-3	RKA 185 1/4 L G	1/6	4051589878203
	087820-1-3	RKA 185 1/4 N	1/6	4051589878210
	087820-2-3	RKA 185 1/4 PE	1/6	4051589878227
	087820-3-3	RKA 185 1/4 L B	1/6	4051589878234
	087820-4-3	RKA 185 1/4 L S	1/6	4051589878241
Accessories				
	087800-0-0	dust cover for RKA 185 series	12/216	4051589878005



087800-0-0

Dimensions:

