

RKA 50 1/4 - 1 POLE



087320-0-3

TERMINAL CROSS SECTION

4 x 50 mm² - 6 mm² (1/0 - 10 AWG)
35 mm² - 4 mm²



- > modular system
- > user-defined stackable
- > to fit on DIN rail TS 35 or installation plate



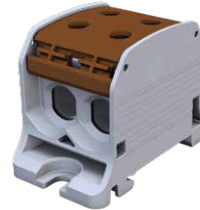
AL / CU



087320-1-3



087320-2-3



087320-3-3



087320-4-3

For aluminium and copper conductors (Al/Cu)



NOMINAL VOLTAGE	NOMINAL CURRENT	STANDARDS
1000 V AC/DC	150 A Cu	IEC 60947-7-1
1000 V AC/DC	150 A Al	EN 61238-1
600 V	150 A Cu / 120 A Al	UL-1059 / CSA C22.2 No.158-10

Model	Part No.	Type	PU	GTIN / EAN
RKA 50 1/4 for aluminium/ copper conductors	087320-0-3	RKA 50 1/4 L G	5/40	4051589873208
	087320-1-3	RKA 50 1/4 N	5/40	4051589873215
	087320-2-3	RKA 50 1/4 PE	5/40	4051589873222
	087320-3-3	RKA 50 1/4 L B	5/40	4051589873239
	087320-4-3	RKA 50 1/4 L S	5/40	4051589873246
	Accessories			
	087300-0-0	dust cover for RKA 50 series	54/972	4051589873000



087300-0-0

Dimensions:

