

## RKA 95 1/6 - 1 POLE



087560-0-3

### TERMINAL CROSS SECTION

6 x 95 mm<sup>2</sup> - 16 mm<sup>2</sup> (3/0 - 6 AWG)  
70 mm<sup>2</sup> - 10 mm<sup>2</sup>



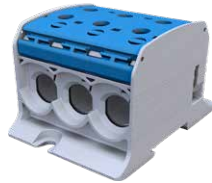
- > modular system
- > user-defined stackable
- > to fit on DIN rail TS 35 or installation plate

### MEASUREMENT CONNECTION

3 x 10 mm<sup>2</sup> - 1,5 mm<sup>2</sup> (8 - 16 AWG)  
6 mm<sup>2</sup> - 1,5 mm<sup>2</sup> (10 - 16 AWG)



**AL / CU**



087560-1-3



087560-2-3



087560-3-3



087560-4-3

## For aluminium and copper conductors (Al/Cu)



### NOMINAL VOLTAGE

1000 V AC/DC  
1000 V AC/DC  
600 V

### NOMINAL CURRENT

232 A Cu  
200 A Al  
200 A Cu / 155 A Al

### STANDARDS

IEC 60947-7-1  
EN 61238-1  
UL-1059 / CSA C22.2 No.158-10



Model	Part No.	Type	PU	GTIN / EAN
RKA 95 1/6 for aluminium/ copper conductors	087560-0-3	RKA 95 1/6 L G	1/12	4051589875608
	087560-1-3	RKA 95 1/6 N	1/12	4051589875615
	087560-2-3	RKA 95 1/6 PE	1/12	4051589875622
	087560-3-3	RKA 95 1/6 L B	1/12	4051589875639
	087560-4-3	RKA 95 1/6 L S	1/12	4051589875646
	<b>Accessories</b>			
	087500-0-0	dust cover for RKA 95 series	20/360	4051589875004



087500-0-0

### Dimensions:

