

Technical data

Description:	Main Line Branch Terminal 35 mm ² – 3 pole (Al/Cu)
Construction:	Model C – all-side fingersafe, modular system
Item no. :	080230-x-3

Remarks: The product is compliant with the EC ROHS directives

Standards: IEC 60947-7-1



Nominal Voltage: 1.000 V AC / 1.000 V DC

Nominal current: Cu 202 A (2x25mm²); 125 A (1x35mm²) as per IEC 60947-7-1
Al 125 A (1x35mm²)* as per IEC 61238-1 (Class A)

* Approved with Reko SFS 4880 (manufactured by Reka Cables Ltd)

Power loss: Tested by SGS Fimko Ltd (FI) (see chart 1)

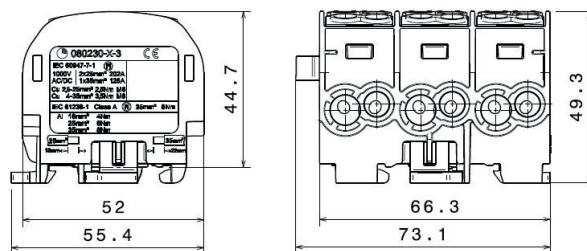
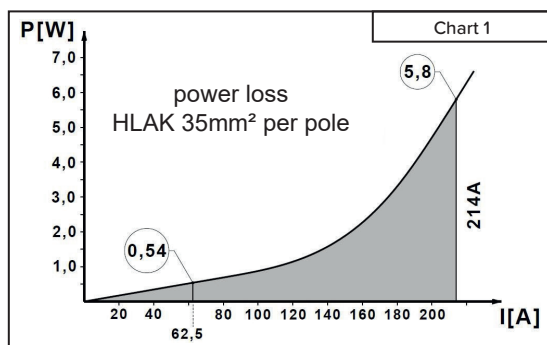
Terminal cross section:
(per pole)

	2 x 35 mm ² (Rundleiter)			2 x 25 mm ² (round conductor)		
	Cu		Al	Cu		Al
35 mm ²	3,5 Nm	-	8 Nm	-	-	-
25 mm ²	3,5 Nm	3,5 Nm	6 Nm	2,5 Nm	-	6 Nm
16 mm ²	3,5 Nm	3,5 Nm	4 Nm	2,5 Nm	2,5 Nm	4 Nm
10 mm ²	3,5 Nm	3,5 Nm	-	2,5 Nm	2,5 Nm	-
6 mm ²	3,5 Nm	3,5 Nm	-	2,5 Nm	2,5 Nm	-
4 mm ²	3,5 Nm	3,5 Nm	-	2,5 Nm	2,5 Nm	-
2,5 mm ²	-	3,5 Nm	-	2,5 Nm	2,5 Nm	-
1,5 mm ²	-	-	-	-	2,5 Nm	-
stripping length	22 mm			18 mm		
screw	M8 (+/- PZ2)			M6 (+/- PZ2)		

Materials: Terminal body: brass (CuZn39Pb2) 3-4µm Ni / 7-10µm Sn
Housing: PA 6 (Halogen-free)
Screws: steel Zn thick-film passivated

Flame resistance: Self-extinguishing

Mechanical data: Dimensions: width x height x depth (mm): 73,1 x 49,3 x 55,4



Design

Basic housing colour – light grey RAL 7035

Part no.	Design	Cover colour	PU	GTIN (EAN)
080230-0-3	3L		-	4051589023030
080230-1-3	L / N / PE		-	4051589023139
080230-2-3	PE / L / N		-	4051589023238
080230-3-3	2L / N		-	4051589023337
080230-4-3	2L / PE		-	4051589023436

HORA eTec GmbH

Lange Strasse 65, D - 32257 Bünde, Phone: +49 (0) 52 23 / 49 80 - 0

E-mail: info@hora-etec.com, Internet: www.hora-etec.com

Technical data

Description:	Main Line Branch Terminal 35 mm ² – 3 pole (Cu)
Construction:	Model C – all-side fingersafe, modular system
Item no. :	080230-x-4

Remarks: The product is compliant with the EC ROHS directives

Standards: VDE Certification as per DIN VDE 0603-2, EN 60947-7-1



Nominal Voltage: 1.000 V AC / 1.000 V DC

Nominal current: Cu 202 A (2x25mm²); 125 A (1x35mm²) as per IEC 60947-7-1

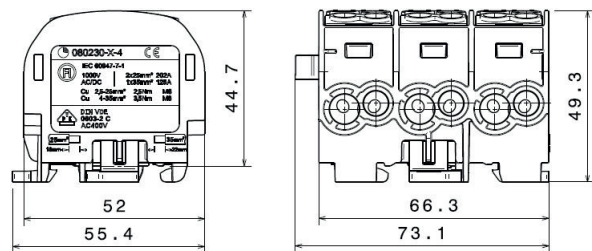
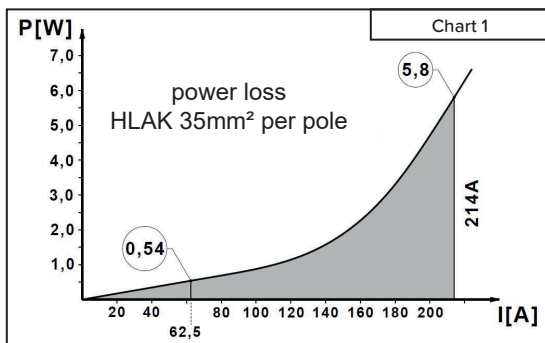
Power loss: Tested by SGS Fimko Ltd (FI) (see chart 1)

Terminal cross section: (per pole)	2 x 35 mm ² (Rundleiter)		2 x 25 mm ² (round conductor)	
	Cu		Cu	
35 mm ²	3,5 Nm	-	-	-
25 mm ²	3,5 Nm	3,5 Nm	2,5 Nm	-
16 mm ²	3,5 Nm	3,5 Nm	2,5 Nm	2,5 Nm
10 mm ²	3,5 Nm	3,5 Nm	2,5 Nm	2,5 Nm
6 mm ²	3,5 Nm	3,5 Nm	2,5 Nm	2,5 Nm
4 mm ²	3,5 Nm	3,5 Nm	2,5 Nm	2,5 Nm
2,5 mm ²	-	3,5 Nm	2,5 Nm	2,5 Nm
1,5 mm ²	-	-	-	2,5 Nm
stripping length	22 mm		18 mm	
screw	M8 (+/- PZ2)		M6 (+/- PZ2)	

Materials: Terminal body: brass (CuZn39Pb2) bright
Housing: PA 6 (Halogen-free)
Screws: steel Zn thick-film passivated

Flame resistance: Self-extinguishing

Mechanical data: Dimensions: width x height x depth (mm): 73,1 x 49,3 x 55,4



Design

Basic housing colour – light grey RAL 7035

Part no.	Design	Cover colour	PU	GTIN (EAN)
080230-0-4	3L		-	4051589802307
080230-1-4	L / N / PE		-	4051589802314
080230-2-4	PE / L / N		-	4051589802321
080230-3-4	2L / N		-	4051589802338
080230-4-4	2L / PE		-	4051589802345

HORA eTec GmbH

Lange Strasse 65, D - 32257 Bünde, Phone: +49 (0) 52 23 / 49 80 - 0

E-mail: info@hora-etec.com, Internet: www.hora-etec.com