

Technical data

| | |
|---------------|--|
| Description: | Main Line Branch Terminal 35 mm ² „double block“ – 1 pole (Al/Cu) |
| Construction: | Model C – all-side fingersafe, modular system |
| Item no. : | 080220-x-3 |

Remarks: The product is compliant with the EC ROHS directives

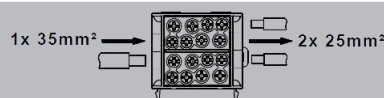
Standards: IEC 60947-7-1



Nominal Voltage: 1.000 V AC / 1.000 V DC

Nominal current: Cu 428 A (4x25mm²); 125 A (1x35mm²) as per IEC 60947-7-1

Al 125 A (1x35mm²)+ as per IEC 61238-1 (Class A)



* Approved with Reko SFS 4880 (manufactured by Reka Cables Ltd)

Power loss: Tested by SGS Fimko Ltd (FI) (see chart 1)

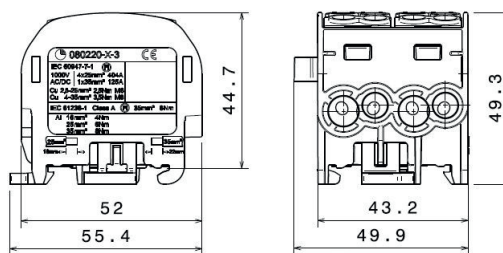
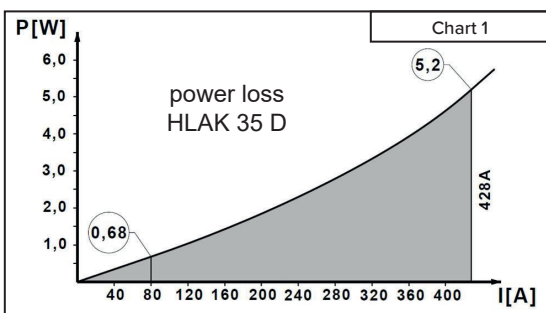
Terminal cross section:

| | 4 x 35 mm ² (round conductor) | | | 4 x 25 mm ² (round conductor) | | |
|---------------------|--|--------|------|--|--------|------|
| | | Cu | Al | | Cu | Al |
| | | | | | | |
| 35 mm ² | 3,5 Nm | - | 8 Nm | - | - | - |
| 25 mm ² | 3,5 Nm | 3,5 Nm | 6 Nm | 2,5 Nm | - | 6 Nm |
| 16 mm ² | 3,5 Nm | 3,5 Nm | 4 Nm | 2,5 Nm | 2,5 Nm | 4 Nm |
| 10 mm ² | 3,5 Nm | 3,5 Nm | - | 2,5 Nm | 2,5 Nm | - |
| 6 mm ² | 3,5 Nm | 3,5 Nm | - | 2,5 Nm | 2,5 Nm | - |
| 4 mm ² | 3,5 Nm | 3,5 Nm | - | 2,5 Nm | 2,5 Nm | - |
| 2,5 mm ² | - | 3,5 Nm | - | 2,5 Nm | 2,5 Nm | - |
| 1,5 mm ² | - | - | - | - | 2,5 Nm | - |
| stripping length | 22 mm | | | 18 mm | | |
| screw | M8 (+/- PZ2) | | | M6 (+/- PZ2) | | |

Materials: Terminal body: brass (CuZn39Pb2) 3-4µm Ni / 7-10µm Sn
 Housing: PA 6 (Halogen-free)
 Screws: steel Zn thick-film passivated

Flame resistance: Self-extinguishing

Mechanical data: Dimensions: width x height x depth (mm): 49,9 x 49,3 x 55,4



Design

Basic housing colour – light grey RAL 7035

| Part no. | Design | Cover colour | PU | GTIN (EAN) |
|------------|--------|-----------------------|----|---------------|
| 080220-0-3 | L "G" | light grey RAL 7035 | 2 | 4051589022033 |
| 080220-1-3 | N | light blue RAL 5012 | 2 | 4051589022132 |
| 080220-2-3 | PE | yellow-green RAL 6018 | 2 | 4051589022231 |
| 080220-3-3 | L "B" | clay brown RAL 8003 | 2 | 4051589022330 |
| 080220-4-3 | L "S" | jet black RAL 9005 | 2 | 4051589022439 |
| 080220-5-3 | R | beige red RAL 3012 | 2 | 4051589022538 |

Technical data

| | |
|---------------|---|
| Description: | Main Line Branch Terminal 35 mm ² „double block“ – 1 pole (Cu) |
| Construction: | Model C – all-side fingersafe, modular system |
| Item no. : | 080220-x-4 |

Remarks: The product is compliant with the EC ROHS directives

Standards: VDE Certification as per DIN VDE 0603-2, EN 60947-7-1



Nominal Voltage: 1.000 V AC / 1.000 V DC

Nominal current: Cu 428 A (4x25mm²); 125 A (1x35mm²) as per IEC 60947-7-1

Power loss: Tested by SGS Fimko Ltd (FI) (see chart 1)

Terminal cross section:

| | 4 x 35 mm ² (round conductor) | | 4 x 25 mm ² (round conductor) | |
|---------------------|--|--------|--|--------|
| | Cu | | Cu | |
| | | | | |
| 35 mm ² | 3,5 Nm | - | - | - |
| 25 mm ² | 3,5 Nm | 3,5 Nm | 2,5 Nm | - |
| 16 mm ² | 3,5 Nm | 3,5 Nm | 2,5 Nm | 2,5 Nm |
| 10 mm ² | 3,5 Nm | 3,5 Nm | 2,5 Nm | 2,5 Nm |
| 6 mm ² | 3,5 Nm | 3,5 Nm | 2,5 Nm | 2,5 Nm |
| 4 mm ² | 3,5 Nm | 3,5 Nm | 2,5 Nm | 2,5 Nm |
| 2,5 mm ² | - | 3,5 Nm | 2,5 Nm | 2,5 Nm |
| 1,5 mm ² | - | - | - | 2,5 Nm |
| stripping length | 22 mm | | 18 mm | |
| screw | M8 (+/- PZ2) | | M6 (+/- PZ2) | |

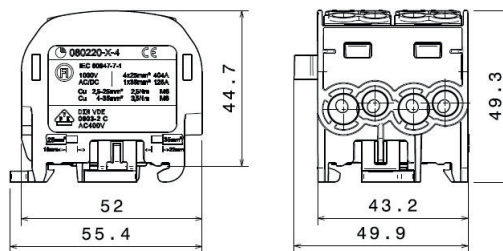
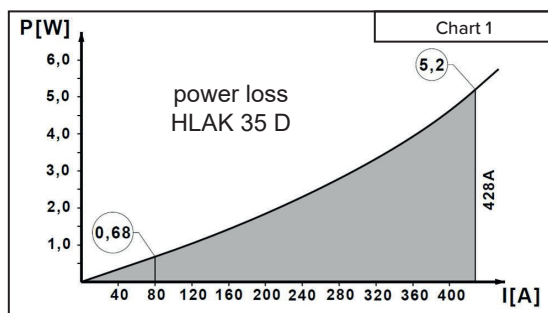
Materials: Terminal body: brass (CuZn39Pb2) bright

Housing: PA 6 (Halogen-free)

Screws: steel Zn thick-film passivated

Flame resistance: Self-extinguishing

Mechanical data: Dimensions: width x height x depth (mm): 49,9 x 49,3 x 55,4



Design

Basic housing colour – light grey RAL 7035

| Part no. | Design | Cover colour | PU | GTIN (EAN) |
|------------|--------|-----------------------|----|---------------|
| 080220-0-4 | L "G" | light grey RAL 7035 | 2 | 4051589802208 |
| 080220-1-4 | N | light blue RAL 5012 | 2 | 4051589802215 |
| 080220-2-4 | PE | yellow-green RAL 6018 | 2 | 4051589802222 |
| 080220-3-4 | L "B" | clay brown RAL 8003 | 2 | 4051589802239 |
| 080220-4-4 | L "S" | jet black RAL 9005 | 2 | 4051589802246 |
| 080220-5-4 | R | beige red RAL 3012 | 2 | 4051589802253 |